

## G10B Series

### Subminiature Sealed Micro Switch



#### ■ Features

- Designed For Water and Dust Tigh(IP67)
- Small Compact Size
- Long Life and High Reliability
- Variety of Levers Optional
- Widely used in Automotive Electronics, Appliance and Industrial Control etc.

#### ■ Application

- ◆ Car
- ◆ Air-conditioner
- ◆ Communication
- ◆ Home Appliance
- ◆ Charging Pile
- ◆ Charging Gun

#### ■ Parameters:

Rating	P1	0.1A 125/250VAC 30VDC
	03	3A 125/250VAC 30VDC
Operating Frequency	Electrical	10~30 cycles/minute
	Mechanical	120 cycles/minute
Contact Resistance(Initiative)		100mΩ Max
Insulation Resistance(at500VDC)		At500VDC, 100MΩ Min
Dielectric Strength		AC 600V RMS (50-60Hz)
Storage Temperature		-40℃~+85℃
Storage Humidity		85% RH Max
Service Life	Electrical	10,000 cycles
	Mechanical	300,000 cycles

**G10B Series Micro Switch Ordering Instruction**

G10B	03	150	S	01	A	300	T001	U
Switch Type	Electrical Rating	Max Operating Force at Pin Plunger	Terminal Type	Lever Type	Circuit code	Wires length (AWG Number UL1007 AWG Type 24#)	Custom code	Logo
G10B Series Micro-Switch	P1 <small>ENEC/CQC 0.1A 125/250VAC 30VDC UL/CUL: 40T85 μ 1E4</small>	150 150gf Max	S Solder Terminals	00 No Lever Pin Plunger	A SPDT	300mm length standard wires 300mm	General	ZINC EAK
	03 <small>ENEC/CQC 3A 125/250VAC 30VDC UL/CUL: 40T85 μ 1E4</small>	... Other	P Straight PCB Terminals	02# Std. Straight Lever	B SPST-NC	100mm length	... Other	Unionwell
			Q Snap in PCB Terminals	03# Long Straight Lever	C SPST-NO	... Other		...
			E Molded lead wires downwards	...				
			G Molded Lead Wires Leads to Left Side (Pin plunger side)					
			F Molded lead Wires Leads to right Side (Opposite to Pin plunger side)					
			... Special Terminals					

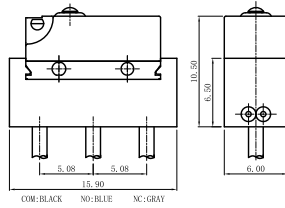
Terminal Type

Terminal thickness: 0.4mm

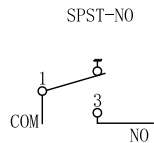
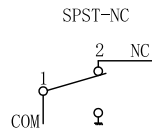
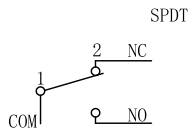
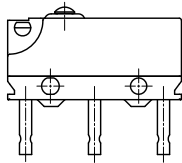
Straight Solder Terminals	Straight PCB Terminals
PCB Left Terminals	PCB Right Terminals
Wires Leads to right Side (Opposite to Pin plunger side)	Wires Leads to left Side (Pin plunger side), length: 300mm

Terminal Type

Wires Leads to Bottom (300mm length)



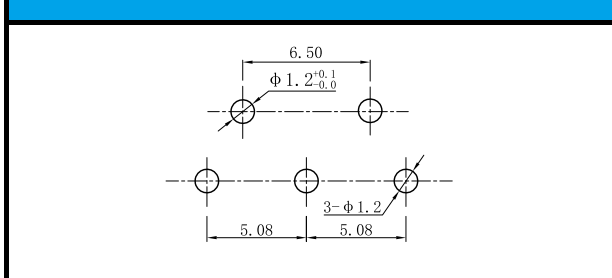
Circuit



Mounting Hole Dimension

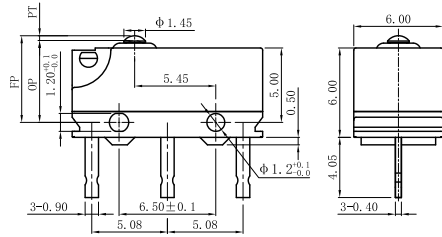
Mounting Hole Dimension	Mounting Hole Dimension of PCB Terminals
<p>Mounting holes</p> <p>2-<math>\phi 1.2</math> mounting holes or M1.1 screw holes 6.50</p>	<p>3-<math>\phi 1.2</math> 5.08 5.08</p>

Left and Right PCB Terminal Mounting Hole Dimension



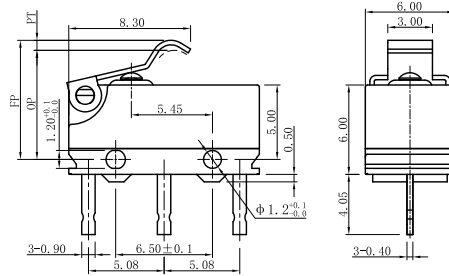
Dimensions and Operating Characteristics

◆G10B□□-□□□P00A



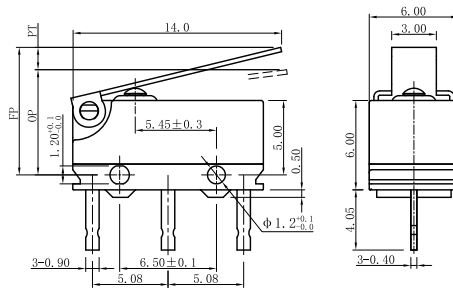
OF Max. (gf)	RF Min. (gf)	PT Max. (mm)	OT Min. (mm)	DT Max. (mm)	FP Max. (mm)	OP (mm)
-150	150	20	0.2	0.2	6.1	5.5±0.3

◆G10B□□-□□□P02A



OF Max. (gf)	RF Min. (gf)	PT Max. (mm)	OT Min. (mm)	DT Max. (mm)	FP Max. (mm)	OP (mm)	
-150	90	15	1.50	0.3	0.7	8.7	7.5±0.6

◆G10B□□-□□□P03A



OF Max. (gf)	RF Min. (gf)	PT Max. (mm)	OT Min. (mm)	DT Max. (mm)	FP Max. (mm)	OP (mm)	
-150	50	8	3.4	0.3	0.8	8.8	6.8±1.0