



G304G Mini Sealed Micro Switch

■ Features

- Designed For Water and Dust Tight(IP67)
- Small Compact Size
- Long Life and High Reliability
- Variety of Levers
- Wide Range of Wiring Terminals
- Widely used in Automotive Electronics,Appliance and Industrial Control etc.
- Customized Designs
- Slide Structure
- Non Short Circuit Conversion

■ Application

- ◆Car
- ◆Air-Conditioner
- ◆Communication
- ◆Electric Tooth Brush
- ◆Toys

■ Parameters

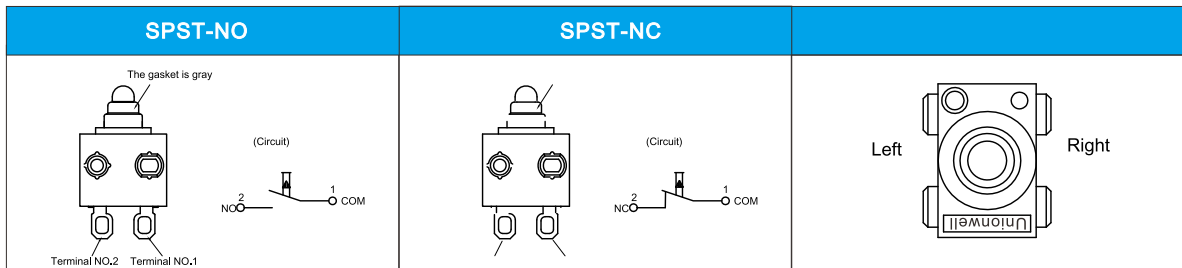
Operation Speed		1~500mm/s
Operating Frequency		120 cycles/min
Insulation Resistance		≥100mΩ (DC500V)
Contact Resistance (Initial Value)	with terminals type	≤100mΩ
	with wire type	≤500mΩ(300mm)
Voltage Resistance	Between terminals	AC500V,50/60Hz,1min.
	Between terminals and uncharged metal parts	AC1000V,50/60Hz,1min.
Vibration	No transformation action	10-55Hz
Service Life	Electrical	300000 cycles(20 cycles/min) 0.1A 12VDC 50 μA 3VDC
	Mechanical	300,000 cycles (30cycles/min)
Protection Level		IEC IP67
Storage Temperature		-40°C~+85°C 60%RH
Storage Humidity		95%RH (+5°C~+35°C)

G304G-Type Series Micro Switch Ordering Instruction

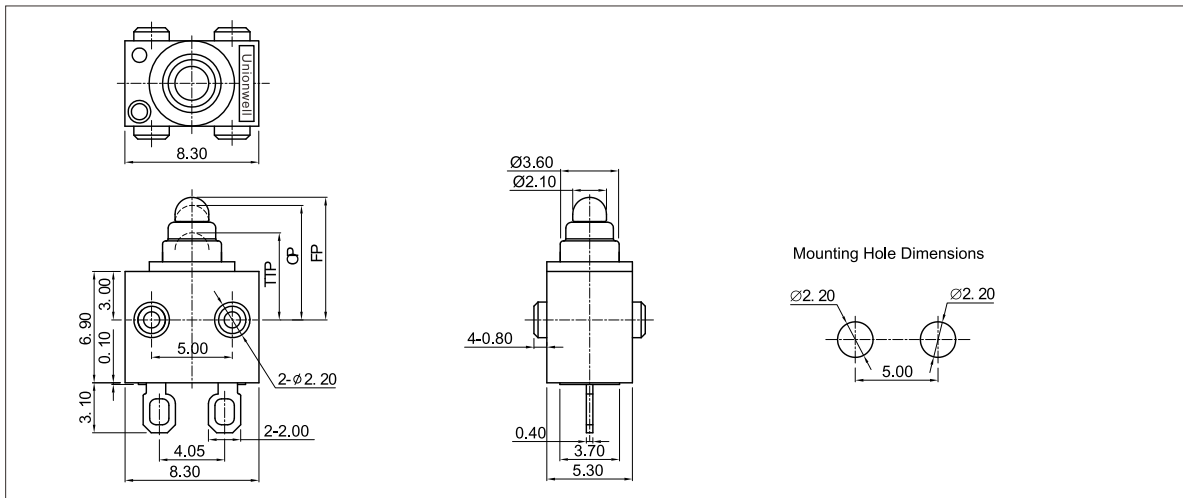
G3	04	150	U	00	E	39	Posts Dimension	A	280	Special Designator
Switch Type	Electrical Rating	Opening Force at pin Plunger, Max.	Terminal Style	Lever Type	Circuit Code	Shape and Posts	Posts Dimension	AWG Number (For wire type only)	Wires length	Special Designator
G3 Series - Micro Switch	04 0.1A, 120C 30VA, 300C	80 80gf Max	U Straight PCB Terminals V Solder Terminals M Short Solder Terminals P Straight PCB Terminals S Short Solder Terminals with Hole & with hole	00 No lever Pin Plunger ... Other	E Slide Type SPST-NO F Slide Type SPST-NC ... Other	39 G type no post 40 G type left posts 41 G type right posts 42 G type two sides posts 43 G type lengthen two sides posts 44 G type revers Left posts 48 G type rectangle one sides posts ... Other	F Standard posts: 2.60mm x 5.0mm G $\phi 2.6 \times 1.5$ mm posts. H $\phi 2.6 \times 2.0$ mm posts. I $\phi 2.2 \times 0.8$ mm posts. K 7.3X1.2X1.2mm posts. ... Other	No molded lead wires A UL1007 C UL1430 D UL1061 E UL1330 F AVSS H UL1332 G UL3132 ... Other	300mm length standard lead wires 300mm 280 280mm length ... Other	S Special code B Molded lead wires on left side C Molded lead wires on left side E Molded lead wires on bottom ... Other

■Circuit

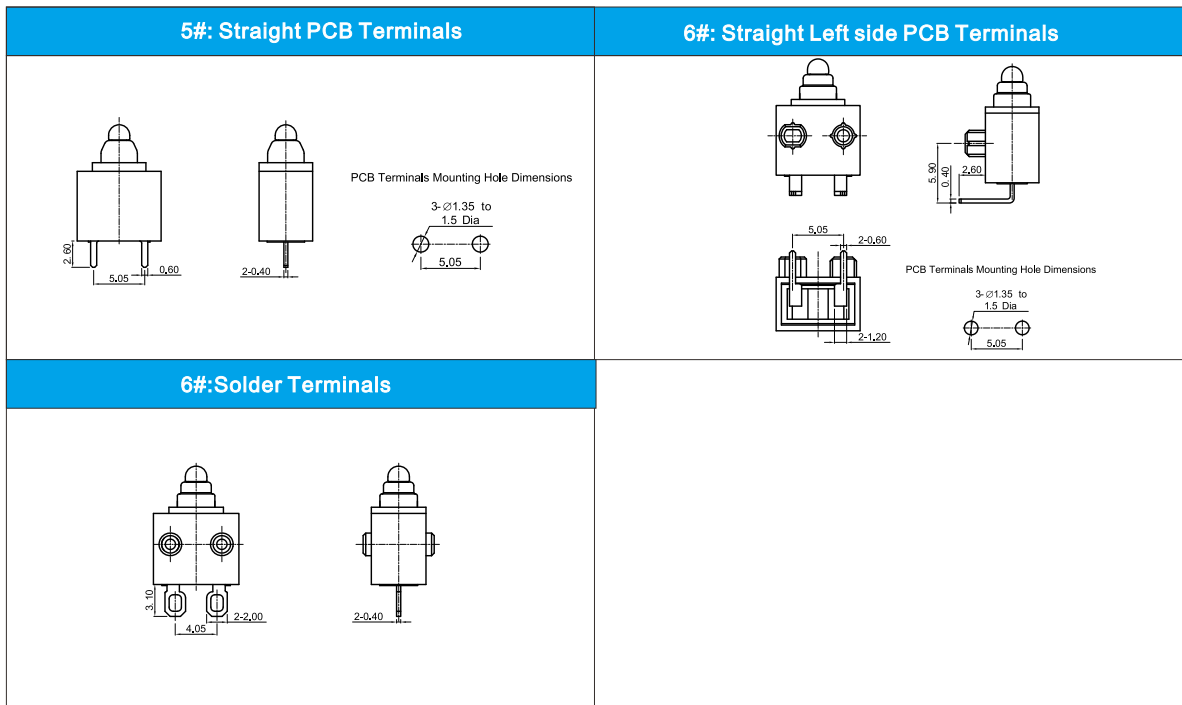
■Post direction define



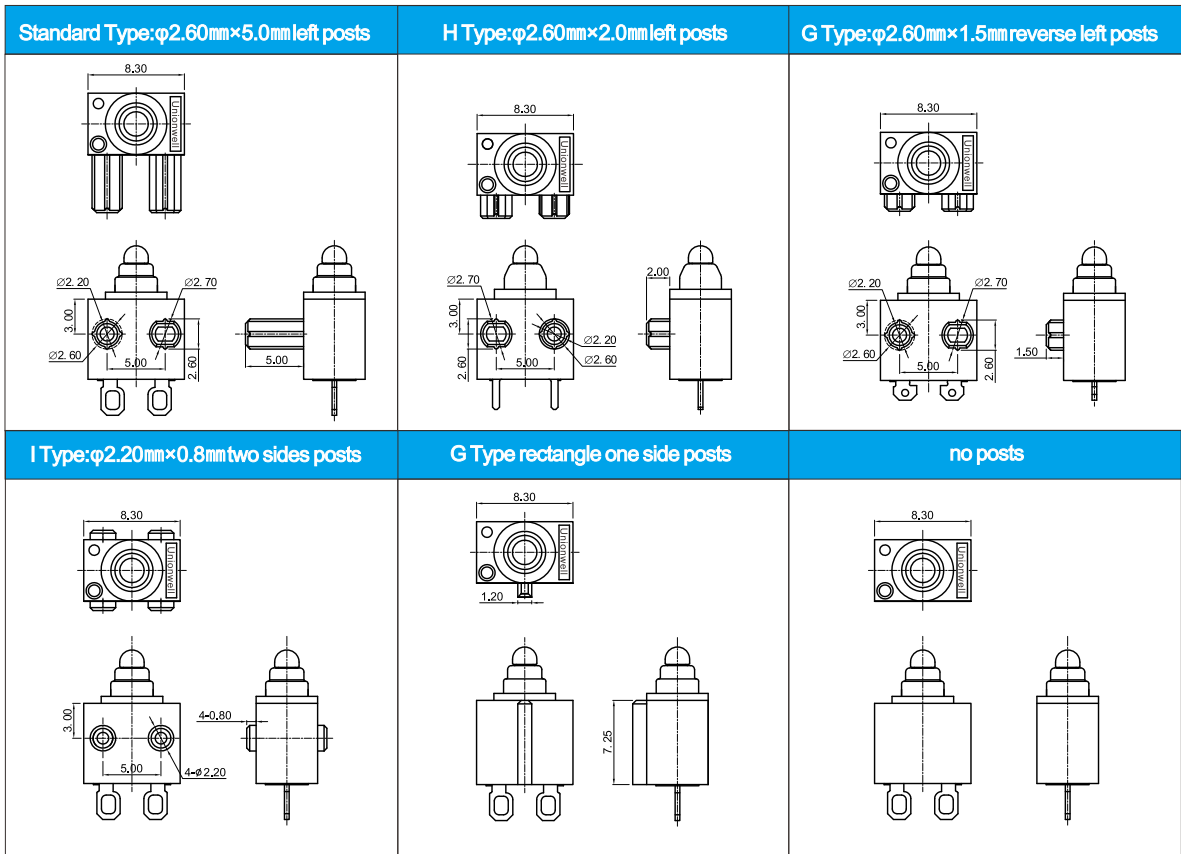
■Basic Mounting Dimensions and Operating Characteristics



■Switch Terminal Type(can be customized)

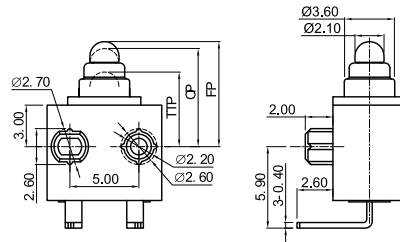


■ Posts Type



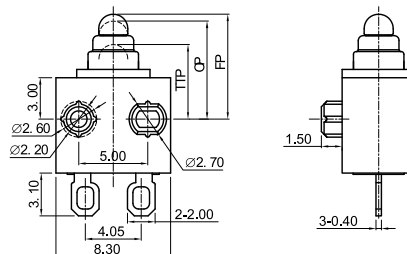
■ Dimensions and Operating Characteristics

◆ G304-150U00E40H



OF Max. (gf)	TTP Max. (mm)	FP Max. (mm)	OP (mm)
150	5.3	7.9	7.1±0.5

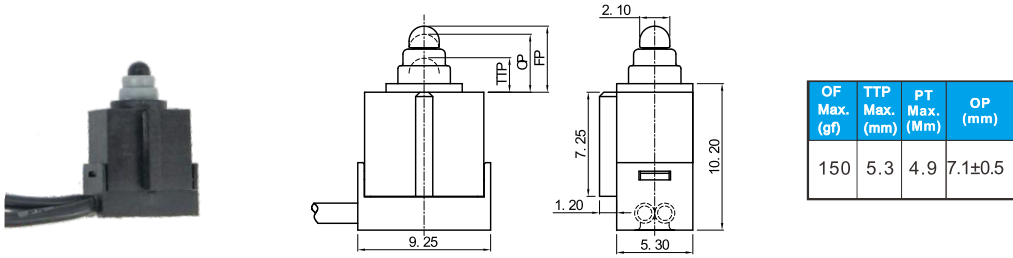
◆ G304-150V00F44G



OF Max. (gf)	TTP Max. (mm)	PT Max. (mm)	OP (mm)
150	5.3	7.9	7.1±0.5

■ **Dimensions and Operating Characteristics**

◆ **G304-150M00E48-□□□□B**



◆ **G304-150M00E40H-□□□□C**

