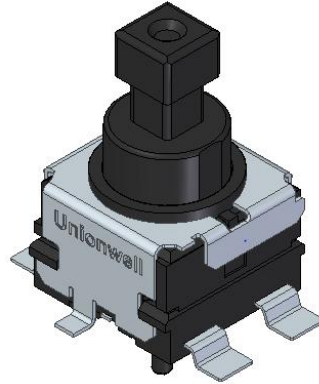


# Unionwell

## G25 series

### ■G25 Push-Button Switch



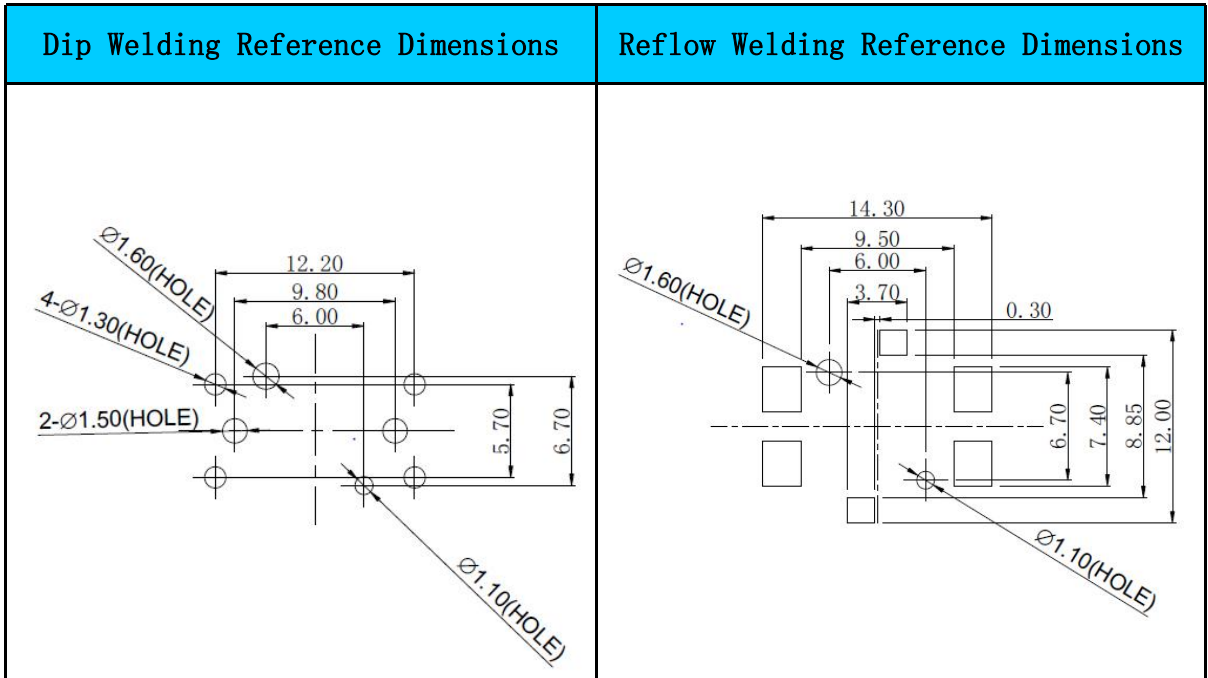
### ■Production Features

- High Contact Reliability Pushbutton Switches for Micro Loads
- High stability in high temperature environment
- Have two function modes of self-locking and non-locking
- Feel smooth and good operating experience
- There are two welding process options of DIP and SMT

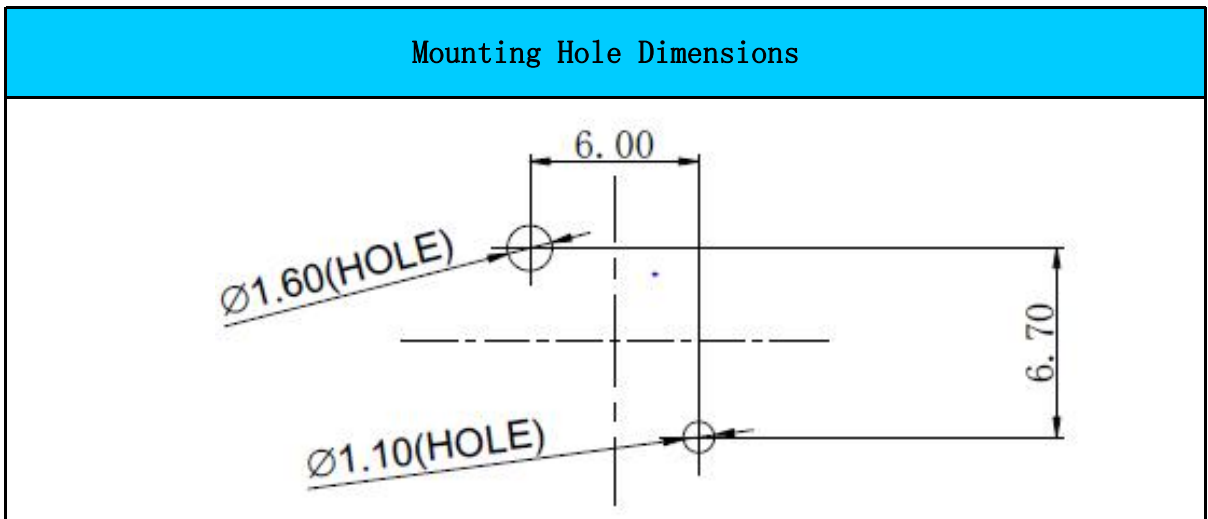
### ■Parameters

Operating Frequency	15~20/minute	
Insulation Resistance	≥3MΩ (VDC 100V Insulation Resistance Meter)	
Contact Resistance(Initiative)	≤100mΩ	
Dielectric Strength	Between Terminals Of The Same Pole	AC100V,50/60HZ,1min.
	Between each terminal and non-live metal parts	AC1500V,50/60HZ,1min.
Service Life	Electrical	30,000/cycles(15~20/min) 1A 14.5VDC 10mA 5VDC
	Mechanical	300,000/cycles (60/min)
Operating temperature	-40~+85°C	
Operating Humidity	<95%RH (+5~+35° C)	

## ■ Welding Reference Dimensions

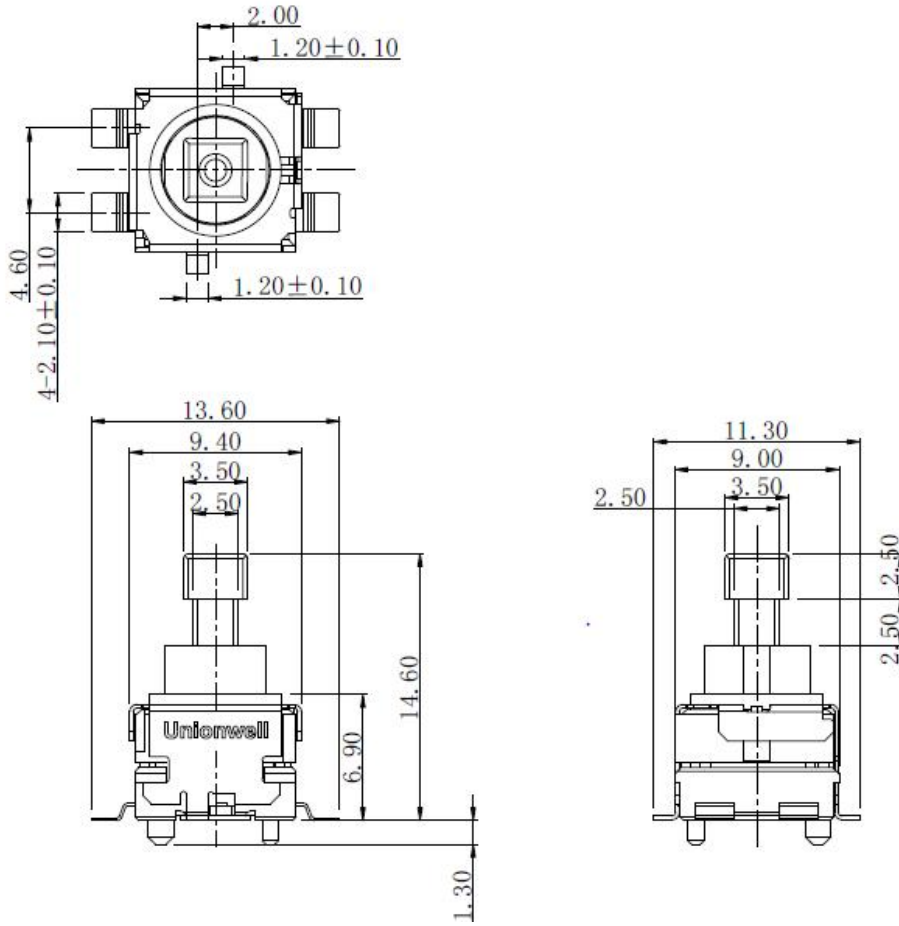


## ■ Mounting Post Dimensions





## Basic Dimensions (mm)



## Function type

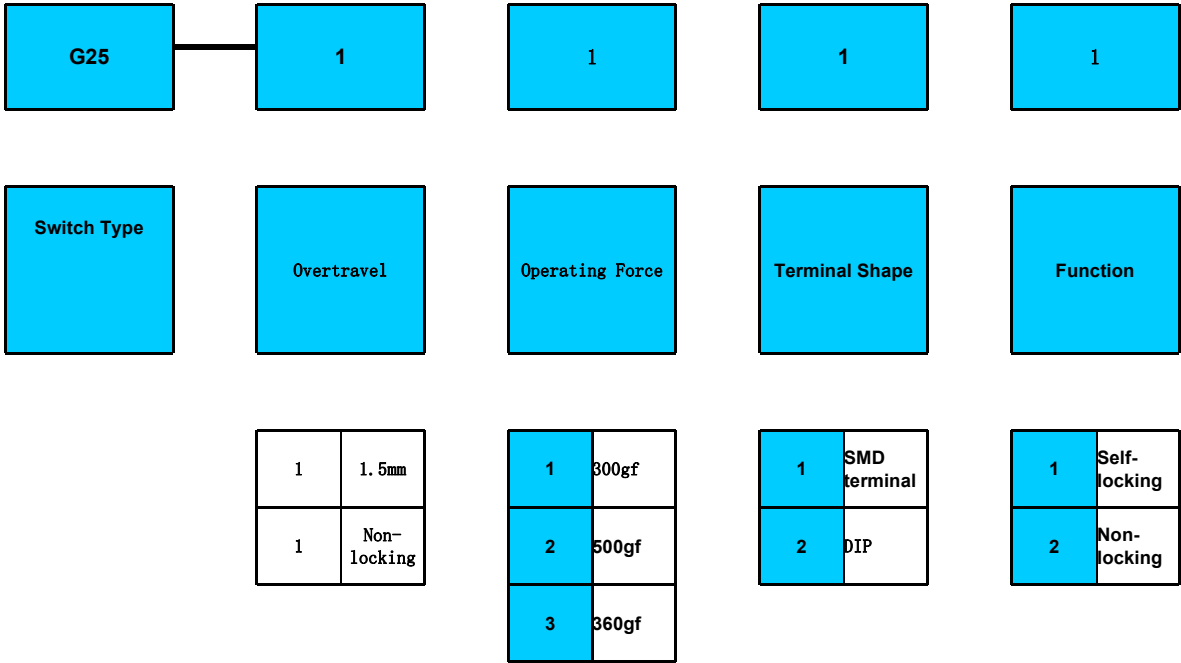
Self-locking	Non-locking
<p>Diagram illustrating the self-locking function type. The component is shown in the FULL STROKE POSITION. The distance from the bottom edge to the top of the main body is <math>11.86 \pm 0.20</math>. The distance from the bottom edge to the top of the lock position is 13.10. The overall height is 14.60.</p>	<p>Diagram illustrating the non-locking function type. The component is shown in the FULL STROKE POSITION. The distance from the bottom edge to the top of the main body is <math>11.86 \pm 0.20</math>. The overall height is 14.60.</p>

## Terminal Type

SMD Terminal	Straight Plug Terminal
<p>Technical drawings of the SMD Terminal. The front view shows a width of 1.00 and a terminal spacing of 1.20 ± 0.10. The side view shows a height of 0.15, a total length of 11.30, a distance of 4.60 from the bottom to the top of the main body, and a distance of 4 - 2.10 ± 0.10 from the bottom to the top of the terminal pins.</p>	<p>Technical drawings of the Straight Plug Terminal. The front view shows a width of 0.15, a distance of 3.20 from the bottom to the top of the main body, and a distance of 3.50 from the bottom to the top of the terminal pins. The side view shows a distance of 1.00 from the bottom to the top of the main body, a distance of 5.70 from the bottom to the top of the terminal pins, and a distance of 6.70 from the bottom to the top of the terminal pins.</p>

## Operating Force Type

Operating Force=300gf	Operating Force=500gf
<p>Technical drawing of the SMD Terminal with an operating force of 300gf. The drawing shows the front view of the terminal with a vertical dimension line indicating the operating force of 300gf.</p>	<p>Technical drawing of the Straight Plug Terminal with an operating force of 500gf. The drawing shows the front view of the terminal with a vertical dimension line indicating the operating force of 500gf.</p>



## Application

- Automotive (new energy vehicle glass lift and roof light signal control and other fields)
- Electronic and electrical equipment signal detection